

**Leicester, Leicestershire & Rutland's
Living Well with Dementia Strategy
2019-2022
Consultation**

Presentation to ASC Scrutiny
Commission 20th March 2018

**Key Points of the draft
Joint Dementia Strategy 2019-2022**

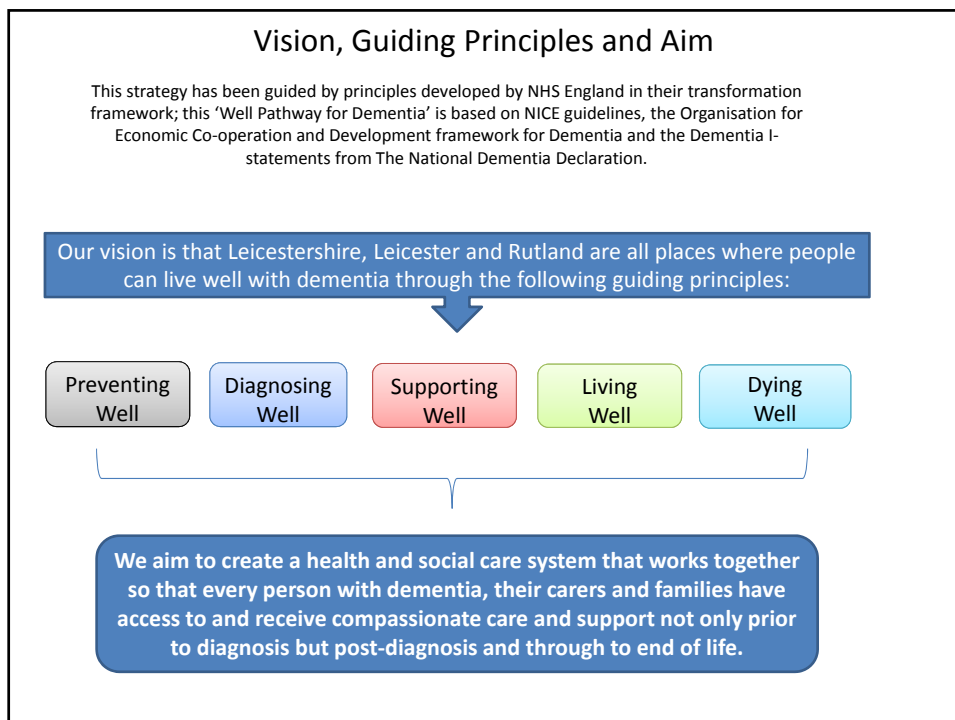
- Shared vision and guiding principles for recognising, valuing and supporting people living with dementia and their carers
- Leicester City Council, Leicestershire County Council, Rutland County Council and the Clinical Commissioning Groups (CCGs) for Leicester, Leicestershire and Rutland.
- Partner organisations that have been involved in the development of the strategy include Healthwatch (Leicestershire and Rutland), Alzheimer's Society, Age UK Leicestershire, The Carers Centre, LPT, UHL, De Montfort University, Leicestershire Police
- Draft currently being signed off by partners
- Consultation will begin in April

Key Points of the draft Joint Dementia Strategy

- Our Strategy sets out the ambition to support people to live well with dementia
- The national strategic direction - The Prime Minister's Challenge on Dementia which details ambitious reforms to be achieved by 2020
- The priorities identified within this are:
 - To improve health and care
 - To promote awareness and understanding
 - Research
- Strategy is informed by what people have told us about their experiences either as a person living with dementia or as a carer
- Strategy is for people with memory concerns, a dementia diagnosis, their families and carers and the organisations supporting them

Monitoring progress

- The Dementia Programme Board is part of the Sustainability and Transformation Plan (STP) governance structure have led on the development of this strategy
- During the consultation phase more detailed action plans will be developed to further capture both partnership and ensure all key activities, timescales and measures of impact are in place.
- These action plans will be overseen by the Dementia Programme Board which will report progress to the Home First Programme Board.
- Partner organisations will report progress through their own governance arrangements



LLR Dementia Strategy Delivery Plan 2019 - 2022

This delivery plan will be refreshed on an annual basis to ensure its relevance. Actions have been agreed as a result of engagement with stakeholders and feedback from public consultation. Each member of the LLR Dementia Programme Board will reflect these delivery actions in their own organisational plans and the needs of under-represented groups will be considered in all of the actions listed below.

Action	Responsible	Guiding Principle	Actioned By
Pilot the Dementia Friendly general practice template and consider how to rollout more widely	CCGs	Preventing Well	2019/2020
Promote health checks in primary care	CCGs	Preventing Well	2019/2020
Increase Public Health involvement in the work of the DPB	LLR Dementia Programme Board	Preventing Well	2019
Review memory assessment pathway and referral processes	CCGs & LPT	Diagnosing Well	2019/20
Promote memory pathway	LLR Dementia Programme Board	Diagnosing Well	2019/20
To develop a process to increase the number of people receiving a dementia diagnosis within 6 weeks of a GP referral	CCGs	Diagnosing Well	2020/21

LLR Dementia Strategy Delivery Plan

Action	Responsible	Guiding Principle	Actioned By
Work with Care Homes to pilot and roll out the dementia diagnosis toolkit	CCG & Local Authority Commissioners	Diagnosing Well	2020/2021
Monitor the Dementia Support Services contracts and take action as appropriate	Local Authority Commissioners	Supporting Well	ongoing
Raise awareness of dementia with housing providers	LLR Dementia Programme Board	Supporting Well	2020/2021
Contribute to a review of the workforce development offer to ensure a focus on high levels of expertise when delivering personal care	Health and Social Care professionals and workforce development providers	Supporting Well	2019/2020
Continue to focus on improving the in-patient experience and discharge pathways	LLR Dementia Programme Board	Supporting Well	2019/2020
Promote Dementia Support Services across LLR	Health & Social Care professionals & providers	Living Well	2019/2020

LLR Dementia Strategy Delivery Plan

Action	Responsible	Guiding Principle	Actioned By
Support the work to improve residential provision for people with complex dementia	CCG & Local Authority Commissioners	Living Well	2019/2020
Support the Dementia Action Alliance to develop more dementia friendly communities	LLR Dementia Programme Board	Living Well	2019/2020
Develop routine engagement processes with people living with dementia and carers to inform our work	LLR Dementia Programme Board	Living Well	2019/2020
Review the dementia information offer to ensure it covers a range of topics, including accommodation options	LLR Dementia Programme Board	Living Well	2020/2021
Review the current care and support standards used across LLR and agree a common set	Health & Social Care professionals & providers	Living Well	2020/2021
Work with care homes and other providers to develop training and support to manage crises and work with reablement principles.	Health and Social Care professionals and providers	Living Well	2020/2021
Make stronger links with STP End of Life work-stream	LLR Dementia Programme Board	Dying Well	2019/2021